

FLOOR AREA 178' x 118'/54 x 36m

WORKING HEIGHT (TO GRID) 43'/13m

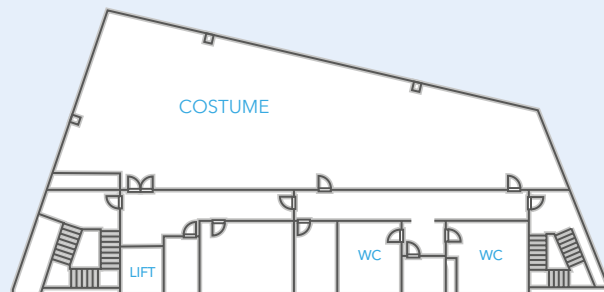
STAGE DOOR 17' 5' x 17' 4"/5.75 x 5.3m

POWER single/three phase

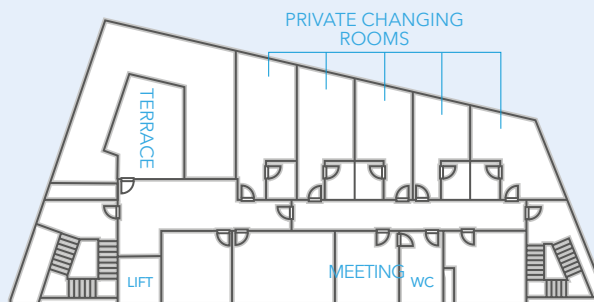
- Largest soundstage on lot
- Lighting Grid/gantry
- Drive in access
- Single/three phase power
- Extensive production/Support space

ARDMORE

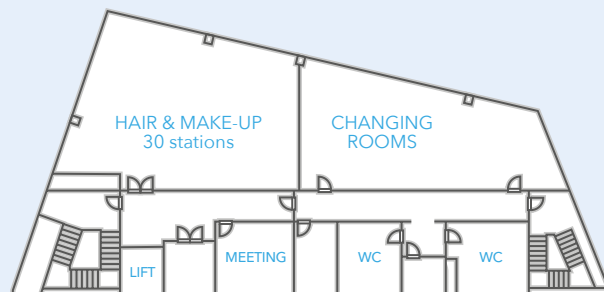
STUDIOS



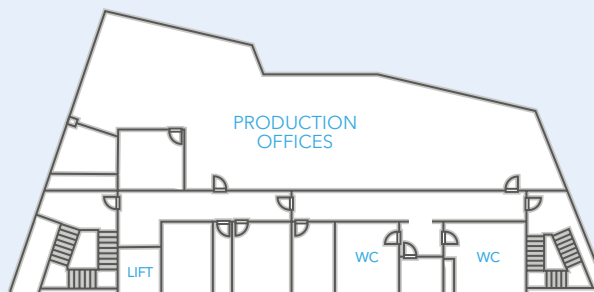
Second Floor



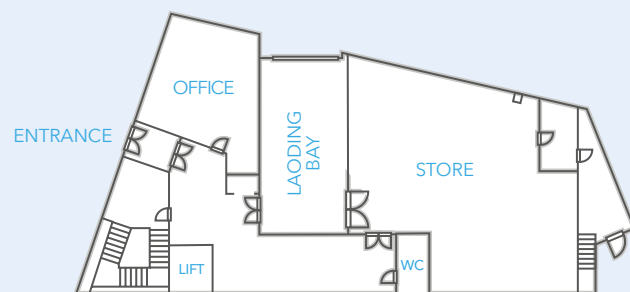
Fourth Floor



First Floor



Third Floor



Ground Floor

H STAGE

Production Offices
and Ancillary Support Space

- Costume/Sewing
- Direct Access to H Stage
- Drive In Loading Bay
- Extras changing space
- Green Room
- Hair and Make Up
- Kitchen
- Male/Female/Accessible WCs
- Meeting Room
- Private Changing Space
- Production Office
- Self Contained
- Storage Area
- Private Roof Terrace